



# Morecambe Offshore Windfarm: Generation Assets Environmental Statement

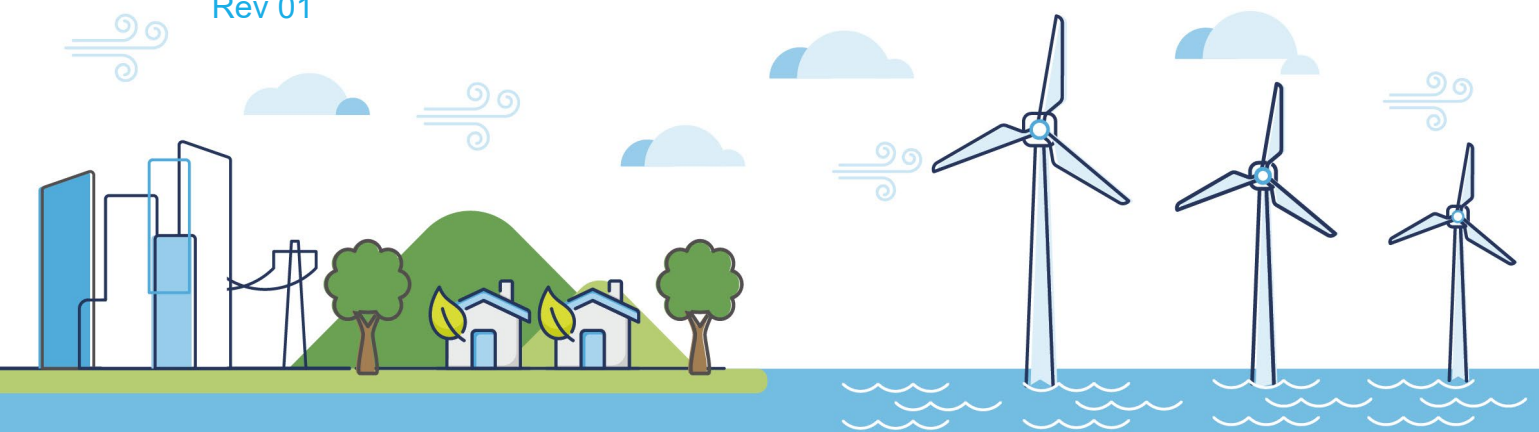
## Volume 5

### Chapter 18 SLVIA Figures (Part 16 of 34)

PINS Document Reference: 5.3.18.16

APFP Regulation: 5(2)(a)

Rev 01



## Document History

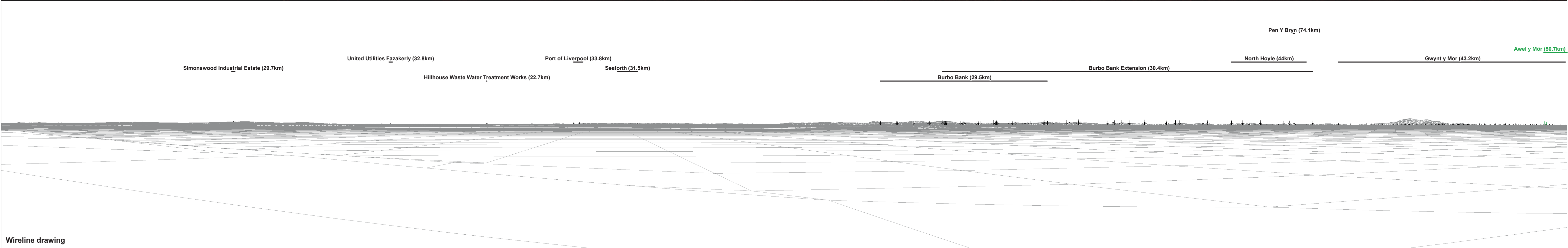
<b>Doc No</b>	MOR001-FLO-CON-ENV-FIG-1180	<b>Rev</b>	01
<b>Alt Doc No</b>	PC1165-RHD-ES-XX-DG-Z-0018		
<b>Document Status</b>	Approved for Use	<b>Doc Date</b>	May 2024
<b>PINS Doc Ref</b>	5.3.18.16	<b>APFP Ref</b>	5(2)(a)

<b>Rev</b>	<b>Date</b>	<b>Doc Status</b>	<b>Originator</b>	<b>Reviewer</b>	<b>Approver</b>	<b>Modifications</b>
01	May 2024	Approved for Use	Royal HaskoningDHV	Morecambe Offshore Windfarm Ltd	Morecambe Offshore Windfarm Ltd	n/a



Baseline photograph

This image provides landscape and visual context only



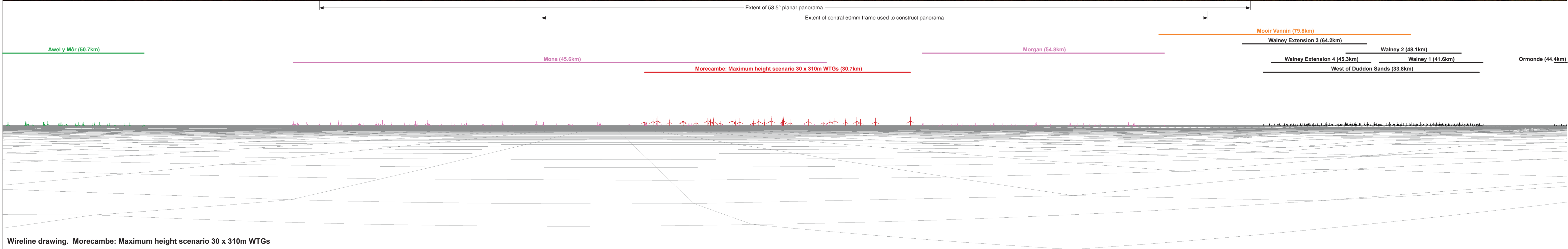
Wireline drawing

OS reference: 331948 E 428356 N  
 Eye level: 7.83 m AOD  
 Direction of view: 190°  
 Nearest turbine: 30.673 km

Horizontal field of view: 90° (cylindrical projection)  
 Principal distance: 522 mm

Camera: Canon EOS 6D  
 Lens: EF50mm f/1.4 USM  
 Camera height: 1.5 m AGL  
 Date and time: 15/09/2022, 21:39

Figure: 18:33h  
 Viewpoint 10: Lytham St Anne's



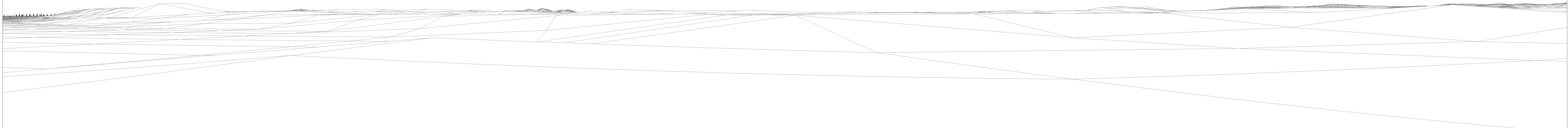
OS reference:	331948 E 428356 N	Horizontal field of view:	90° (cylindrical projection)	Camera:	Canon EOS 6D
Eye level:	7.83 m AOD	Principal distance:	522 mm	Lens:	EF50mm f/1.4 USM
Direction of view:	280°			Camera height:	1.5 m AGL
Nearest turbine:	30.673 km			Date and time:	15/09/2022, 21:39

Figure: 18:33i  
Viewpoint 10: Lytham St Anne's



Ormonde (44.4km)

Barrow (30.4km)

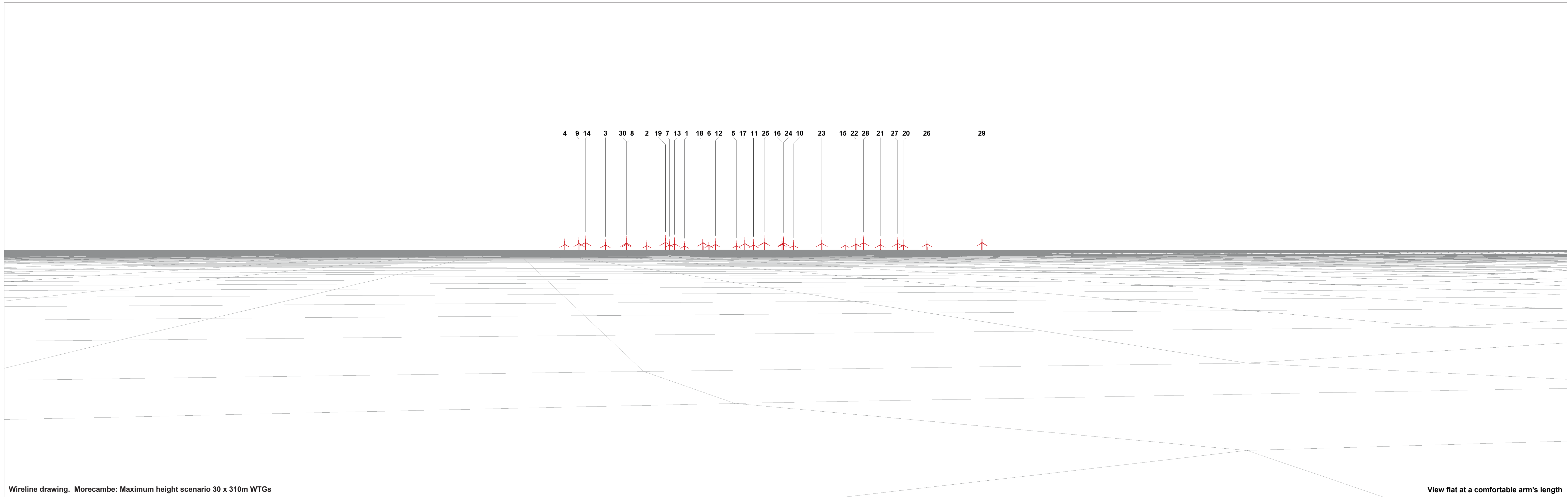


OS reference: 331948 E 428356 N  
 Eye level: 7.83 m AOD  
 Direction of view: 10°  
 Nearest turbine: 30.673 km

Horizontal field of view: 90° (cylindrical projection)  
 Principal distance: 522 mm

Camera: Canon EOS 6D  
 Lens: EF50mm f/1.4 USM  
 Camera height: 1.5 m AGL  
 Date and time: 15/09/2022, 21:39

Figure: 18:33j  
 Viewpoint 10: Lytham St Anne's



Wireline drawing. Morecambe: Maximum height scenario 30 x 310m WTGs

View flat at a comfortable arm's length

<b>OS reference:</b>	331948 E 428356 N	<b>Horizontal field of view:</b>	53.5° (planar projection)	<b>Camera:</b>	Canon EOS 6D
<b>Eye level:</b>	7.83 m AOD	<b>Principal distance:</b>	812.5 mm	<b>Lens:</b>	EF50mm f/1.4 USM
<b>Direction of view:</b>	280°	<b>Paper size:</b>	841 x 297 mm (half A1)	<b>Camera height:</b>	1.5 m AGL
<b>Nearest turbine:</b>	30.673 km	<b>Correct printed image size:</b>	820 x 260 mm	<b>Date and time:</b>	15/09/2022, 21:39

**Figure: 18:33k**  
Viewpoint 10: Lytham St Anne's



Baseline Photograph

View flat at a comfortable arm's length

<b>OS reference:</b> 331948 E 428356 N	<b>Horizontal field of view:</b> 53.5° (planar projection)	<b>Camera:</b> Canon EOS 6D
<b>Eye level:</b> 7.83 m AOD	<b>Principal distance:</b> 812.5 mm	<b>Lens:</b> EF50mm f/1.4 USM
<b>Direction of view:</b> 280°	<b>Paper size:</b> 841 x 297 mm (half A1)	<b>Camera height:</b> 1.5 m AGL
<b>Nearest turbine:</b> 30.673 km	<b>Correct printed image size:</b> 820 x 260 mm	<b>Date and time:</b> 15/09/2022, 21:39

Figure: 18:331  
Viewpoint 10: Lytham St Anne's



Photomontage

View flat at a comfortable arm's length

<b>OS reference:</b> 331948 E 428356 N	<b>Horizontal field of view:</b> 53.5° (planar projection)	<b>Camera:</b> Canon EOS 6D	<b>Figure: 18:33m</b> <b>Viewpoint 10: Lytham St Anne's</b>
<b>Eye level:</b> 7.83 m AOD	<b>Principal distance:</b> 812.5 mm	<b>Lens:</b> EF50mm f/1.4 USM	
<b>Direction of view:</b> 280°	<b>Paper size:</b> 841 x 297 mm (half A1)	<b>Camera height:</b> 1.5 m AGL	
<b>Nearest turbine:</b> 30.673 km	<b>Correct printed image size:</b> 820 x 260 mm	<b>Date and time:</b> 15/09/2022, 21:39	